



FireSafe Flathead Meeting Notes for Thursday, July 25th, 0900-1100 at DNRC

Attendance: Ali Ulwelling (DNRC), Ashley Juran and Kristin Sleeper (DNRC Missoula), Jan Cronin (concerned citizen), Lincoln Chute (Flathead County OES), Sean Johnson (NRCS), Keith VanBroeke (FNF Deputy AFMO), Ben Devall (Chief of Big Mountain FD), Anna Lang (Disaster Diagnostics) Shane Wilson (landowners on Conn Road, student at FVCC), Jeremy Pris (FMO Kalispell unit), Rick Trembath (all around fire guy), Allen Branine (Swan Unit FMO 7 Service Forester), Mike Frost (Whitefish Area Fire Safe Council & sparkplug).

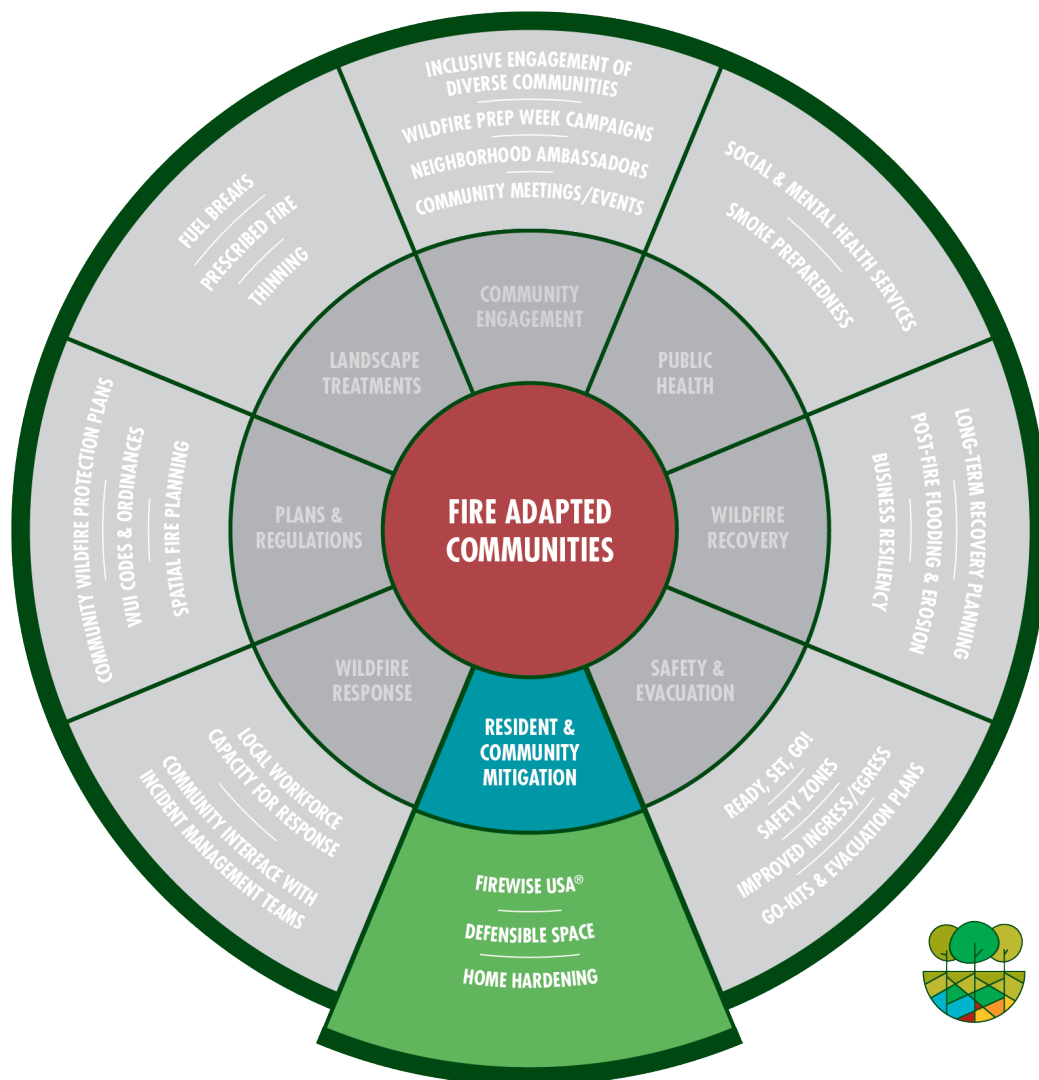
Next Meeting: **Changed to Friday, August 23, 0900-1100 in the DNRC Conference Room.** Mark your calendar for meetings on the 4th Thursday of each month. Please send updates, events, articles, agenda items!

Wyatt Frampton, Forest Action Plan Project Manager, will present at our August meeting.

Fire-Adapted Montana Learning Network – Ashley Juran – Ashley Juran is the DNRC's Outreach Specialist for the Stewardship program in Missoula. She is also the Coordinator of the Fire-Adapted Montana Learning Network and is committed to outreach through face-to-face meetings, Podio, sharing a resource library, photos, postcards, and more. She presented on the FAM Network and what a few of the member programs are working on:

- **Frenchtown Rural Fire Department** hosted a chipping day this past spring. It started in 2018 when they went on a Fire Department exchange with Colorado Springs to learn about it, their first attempt focused on the Firewise Communities in their area and resulted in more interest than they could keep up with. This year they targeted a community that was less engaged. Outreach was a simple sandwich board at the entrance to the HOA. This worked where people were already engaged, but not where they weren't.
- **Blackfoot Challenge worked with the Nature Conservancy** to conduct their first prescribed burn! The burn was 87-acres on Nature Conservancy land and was coordinated through partnerships helping with funding & burn plans. Now they are looking at multiple additional projects and waiting for the window.
 - Allen Branine is interested in coordinating a prescribed fire council and will stay in contact.
- **Big Sky Fire Department** has been working on Community Wildfire Risk Assessments at the fire department level, and this process provided data on areas that were still available for development. They decided that rather than providing home risk assessments AFTER the fact, that perhaps we should engage with builders BEFORE building. They are hosting a [Building for Wildfire Summit](#) on September 18th in Big Sky. (see attached) The focus will be on how homes burn, the cost of building for wildfire resiliency, and how to build safer communities. Hosted by Dustin Tetrault of Big Sky Fire Department and Kimi Barrett, PhD with Headwaters Economics.

Mike Frost asked about the difference between [Firewise](#) and [Fire Adapted Communities](#). Firewise is an National Fire Protection Association (NFPA) program where communities can become Firewise certified by hosting meetings and engaging in fuels reduction. Firewise is a program that fits under the larger umbrella of Fire Adapted Communities. Fire-Adapted Communities involves much more. It is a process, a level of engagement, a shift in mindset. Below is a graphic that the Fire Adapted Communities Learning Network shared recently that may help explain:



Anna Lang asked whether we are inviting legislatures or the planning department to these events? We did have one active member who was in the legislature, but we could invite again. It is time to engage with the planning department again. (At the June meeting, Rich Blaney had also suggested getting the local and congressional leadership out on fires as well when the opportunities allow.)

Mike Frost – Are we still sharing information with the planning department? What avenue can we use to do that? Insurance and title companies, real estate? (Follow up with Rich Blaney.)

Learning Labs – Wildfire Adapted Missoula hosted three learning labs over the past couple of months. Someone will attend and report out at next meeting.

Pile-burning Workshop with Peter Kolb— **Thursday, November 21st** – This date has been confirmed with Dr. Kolb, we will start the outreach, registration, logistics plan. Will include taking videos and capturing snippets during the workshop to share on website and social media. Rick Trembath is helping coordinate. Piles are located at Flathead Lake Lodge; indoor portion will be near Bigfork. Considerations: contingency plan, air quality, back-up date?

Events: West Glacier (Rick Trembath on Fire History), Grouse Mountain, Ashley Lake, Columbia Falls, and West Valley will host this summer/fall and I will keep you posted.

Rick Trembath would like to see us using the fires themselves to talk to the public. Mike West would be willing to host a chat at the Tally Lake Campground and use the loop trail to talk about prescribed fire, wildland fire, fuels reduction, forest management.

NW MT Haz Fuels Program – Deb Starling – Targeted approach is affecting program grants and perception of purpose. Ali is following up with Bureau programs and requesting clarity.

NRCS – Sean gave an explanation/update on Long Range Plans (due Dec 31) and Targeted Implementation Plans (TIPs, must support Long Range Plans) that they are working on: North Fork, Many Lakes, Foy’s area.

Haskill Basin – Rx fire plans moving forward for this fall. Revisit the conversation about providing a viewing point with binos, a radio, and explanation of what is going on during ignition. Potential for some engagement with homeowners in the area & involving the local media to share stories in advance, during, and after.

Social Media – Talk with Jordan Koppen (DNRC Missoula) and Dax VanFossen about assisting with quality videos and editing for messaging pre, during, and after fire season. Dax is willing to participate, we just need to share the vision! Also need to find, organize, and share photos sequences from Rick Moore, Allen Chrisman, Mark Boardman—what an area looks like BEFORE and AFTER work has been done.


Publications - An assortment of new and old publications has been ordered to share at presentations and events. If anyone has ideas or needs anything for engagements, please let Ali know.

Smokey Signs - We have a design and price for the Smokey signs from the MCE! They are about \$2360/ea. with no cost for shipping, which is substantially less than ordering through the shop in Colorado. Order will go in soon.

MCE Design Department
350 Conley Lake Rd.
Deer Lodge, MT 59722
(406) 846-1320 Ext. 2271

One piece of 0.125" aluminum, 34" x 9",
with printed graphics
interchangeable addendum with locking mechanism.

Working on the
body color.



Double sided 60" x 9" bolted & padlock addendum.

Customer: DNRC	Item: Smokey Sign	Contact: Alicia Ulwellling	Date: 6/18/19
Comments/Changes: 90¾" x 58½"			

Community Wildfire Protection Plan – We will pick this up in the fall and start going through it with a more detailed approach.

That’s all and we’ll see you FRIDAY, August 23!